

### USA Hemp Company

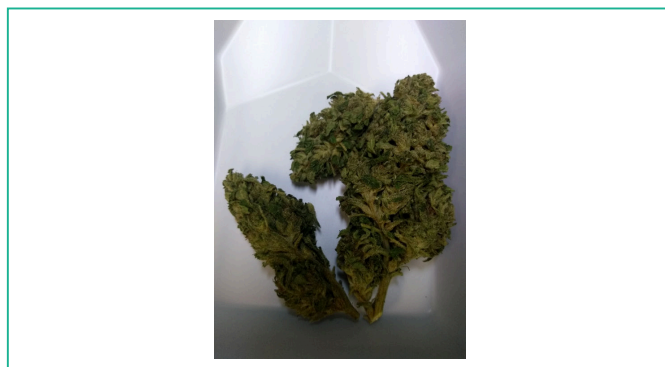
Sample: 1904CH0226.1123

OR 97038  
rafael@usahempc.com  
(503) 875-0101  
Lic. #

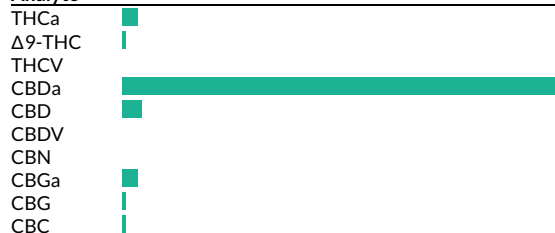
Strain: Wild Bourbon  
Batch#: ; Batch Size: 5 g  
Sample Received: 04/18/2019; Report Created: 04/26/2019; Expires: 04/26/2020  
Harvest/Production Date: 10/30/2018  
Sampling: Random; Environment: Room Temp

### Barrel #88

Plant, Flower - Cured, Outdoor  
Harvest Process Lot: ; METRC Batch: ; METRC Sample:



#### Analyte

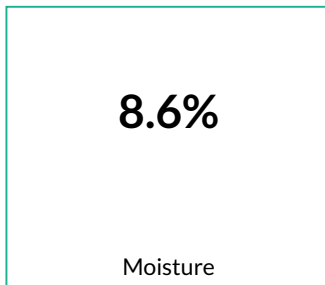
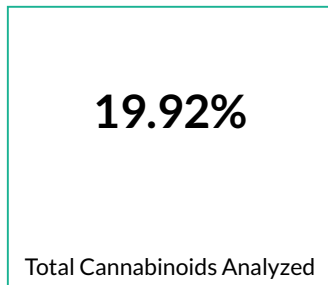
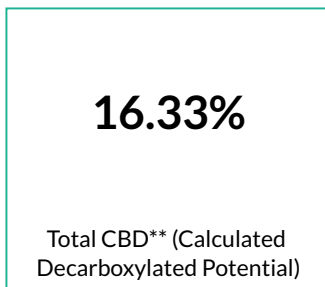
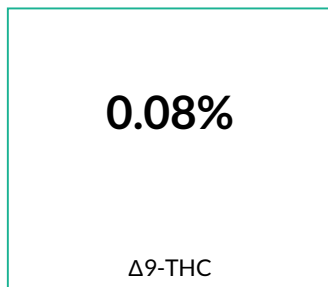


### Cannabinoids

301 HPLC4 20190423-2  
04/23/2019

1 Serving = , g  
servings/container,

Pass



Analyte	LOQ	Mass	Mass
	mg/g	%	mg/g
THCa	0.2	0.59	5.9
Δ9-THC	0.2	0.08	0.8
THCV	0.2	<LOQ	<LOQ
CBDa	0.2	17.78	177.8
CBD	0.2	0.73	7.3
CBDV	0.2	<LOQ	<LOQ
CBN	0.2	<LOQ	<LOQ
CBGa	0.2	0.60	6.0
CBG	0.2	0.08	0.8
CBC	0.2	0.07	0.7
<b>Total</b>		<b>19.92</b>	<b>199.2</b>

Method: CH SOP 400  
\*Total THC = THCa \* 0.877 + d9-THC. \*\*Total CBD = CBDa \* 0.877 + CBD. LOQ = Limit of Quantification; NR = Not Reported; ND = Not Detected

**USA Hemp Company**

**Sample: 1904CH0226.1123**

OR 97038  
rafael@usahempc.com  
(503) 875-0101  
Lic. #

Strain: Wild Bourbon  
Batch#: ; Batch Size: 5 g  
Sample Received: 04/18/2019; Report Created: 04/26/2019; Expires: 04/26/2020  
Harvest/Production Date: 10/30/2018  
Sampling: Random; Environment: Room Temp

**Barrel #88**

Plant, Flower - Cured, Outdoor  
Harvest Process Lot: ; METRC Batch: ; METRC Sample:



**Heavy Metals**

**Complete**

Analyte	Mass	LOQ	Limit	Status
	PPM	PPM	PPM	
Arsenic	<LOQ			Tested
Cadmium	0.18			Tested
Lead	0.05			Tested
Mercury	<LOQ			Tested

**USA Hemp Company**

**Sample: 1904CH0226.1123**

OR 97038  
rafael@usahempc.com  
(503) 875-0101  
Lic. #

Strain: Wild Bourbon  
Batch#: ; Batch Size: 5g  
Sample Received: 04/18/2019; Report Created: 04/26/2019; Expires: 04/26/2020  
Harvest/Production Date: 10/30/2018  
Sampling: Random; Environment: Room Temp

## Barrel #88

Plant, Flower - Cured, Outdoor  
Harvest Process Lot: ; METRC Batch: ; METRC Sample:



## Terpenes

469 GCFID1 20190420-2  
04/20/2019

Analyte	Mass %	Mass mg/g	LOQ %	Analyte	Mass %	Mass mg/g	LOQ %
α-Pinene	0.09	0.9	<div style="width: 10%;"></div>	Isoborneol	<LOQ	<LOQ	
Camphene	0.01	0.1	<div style="width: 2%;"></div>	Borneol	0.01	0.1	<div style="width: 1%;"></div>
Sabinene	<LOQ	<LOQ		Hexahydro Thymol	<LOQ	<LOQ	
(-) -β-Pinene	0.04	0.4	<div style="width: 4%;"></div>	α-Terpineol	0.02	0.2	<div style="width: 2%;"></div>
β-Myrcene	0.33	3.3	<div style="width: 33%;"></div>	γ-Terpineol	0.22	2.2	<div style="width: 22%;"></div>
α-Phellandrene	<LOQ	<LOQ		Nerol	<LOQ	<LOQ	
δ-3-Carene	<LOQ	<LOQ		Pulegone	<LOQ	<LOQ	
α-Terpinene	<LOQ	<LOQ		Geraniol	<LOQ	<LOQ	
p-Isopropyltoluene	<LOQ	<LOQ		Farnesene	0.02	0.2	<div style="width: 2%;"></div>
δ-Limonene	0.04	0.4	<div style="width: 4%;"></div>	α-Cedrene	<LOQ	<LOQ	
Eucalyptol	<LOQ	<LOQ		β-Caryophyllene	0.19	1.9	<div style="width: 19%;"></div>
Ocimene 1	<LOQ	<LOQ		α-Humulene	0.08	0.8	<div style="width: 8%;"></div>
Ocimene 2	0.01	0.1	<div style="width: 1%;"></div>	Valencene	0.01	0.1	<div style="width: 1%;"></div>
γ-Terpinene	<LOQ	<LOQ		Geranyl Acetate	0.04	0.4	<div style="width: 4%;"></div>
Sabinene Hydrate	<LOQ	<LOQ		cis-Nerolidol	0.03	0.3	<div style="width: 3%;"></div>
Fenchone	<LOQ	<LOQ		β-Nerolidol	0.06	0.6	<div style="width: 6%;"></div>
Terpinolene	<LOQ	<LOQ		trans-Nerolidol	0.02	0.2	<div style="width: 2%;"></div>
Linalool	0.05	0.5	<div style="width: 5%;"></div>	Caryophyllene Oxide	0.02	0.2	<div style="width: 2%;"></div>
Endo-Fenchyl Alcohol	0.01	0.1	<div style="width: 1%;"></div>	(-) -Guaiol	0.12	1.2	<div style="width: 12%;"></div>
Camphor	<LOQ	<LOQ		Cedrol	0.01	0.1	<div style="width: 1%;"></div>
(-) -Isopulegol	<LOQ	<LOQ		(-) -α-Bisabolol	0.09	0.9	<div style="width: 9%;"></div>

## Primary Aromas



Method: GC-FID CH SOP 401; based on dry weight; LOQ = Limit of Quantification; NR = Not Reported; ND = Not Detected



# Certificate of Analysis

Informational Use Only - Not For Regulatory Use

Powered by Confident Cannabis  
4 of 7

## USA Hemp Company

OR 97038  
rafael@usahempc.com  
(503) 875-0101  
Lic. #

## Sample: 1904CH0226.1123

Strain: Wild Bourbon  
Batch#: ; Batch Size: 5 g  
Sample Received: 04/18/2019; Report Created: 04/26/2019; Expires: 04/26/2020  
Harvest/Production Date: 10/30/2018  
Sampling: Random; Environment: Room Temp

## Barrel #88

Plant, Flower - Cured, Outdoor  
Harvest Process Lot: ; METRC Batch: ; METRC Sample:



## Microbials

0.9913  
04/22/2019

Complete

Analyte	Limit	Units	Status
Yeast & Mold	CFU/g	CFU/g	Tested
		<LOQ	

Method: AOAC Method 997.02 & 990.12; Based on wet weight; CFU = Colony Forming Unit; TNC = Too Numerous to Count; NR = Not Reported; ND = Not Detected



5691 SE International Way B  
Portland, OR  
(503) 305-5252  
<http://chemhistory.com>  
Lic# OLCC 010-1002015CA5E ORELAP 4057

Patrick Trujillo  
Quality Assurance Director

Confident Cannabis  
All Rights Reserved  
[support@confidentcannabis.com](mailto:support@confidentcannabis.com)  
(866) 506-5866  
[www.confidentcannabis.com](http://www.confidentcannabis.com)



Values reported relate only to the product tested. ChemHistory makes no claims as to the consumer safety or other risks associated with any detected or non-detected levels of any pesticides or residual solvents. This Certificate shall not be reproduced except in full, without the written approval of ChemHistory. ORELAP accredited ID#4057 and OLCC Licensed Cannabis Testing Laboratory #010-1002015CA5E.

## USA Hemp Company

Sample: 1904CH0226.1123

OR 97038  
rafael@usahempc.com  
(503) 875-0101  
Lic. #

Strain: Wild Bourbon  
Batch#: ; Batch Size: 5 g  
Sample Received: 04/18/2019; Report Created: 04/26/2019; Expires: 04/26/2020  
Harvest/Production Date: 10/30/2018  
Sampling: Random; Environment: Room Temp

## Barrel #88

Plant, Flower - Cured, Outdoor  
Harvest Process Lot: ; METRC Batch: ; METRC Sample:



## Quality Control Data

Analytical Batch ID	QC Sample ID	Assay Name	QC Category Name
301 HPLC4 20190423-2	PMB04181901F	Cannabinoids	Blank

### QC Notes

None

Compounds	Blank Result	Blank Max % (LOQ)	Blank Result %	Notes
THCa	0.02	0.05	<LOQ	-
Δ9-THC	0	0.05	<LOQ	-
CBDa	0	0.05	<LOQ	-
CBD	0	0.05	<LOQ	-

## USA Hemp Company

Sample: 1904CH0226.1123

OR 97038  
rafael@usahempc.com  
(503) 875-0101  
Lic. #

Strain: Wild Bourbon  
Batch#: ; Batch Size: 5 g  
Sample Received: 04/18/2019; Report Created: 04/26/2019; Expires: 04/26/2020  
Harvest/Production Date: 10/30/2018  
Sampling: Random; Environment: Room Temp

## Barrel #88

Plant, Flower - Cured, Outdoor  
Harvest Process Lot: ; METRC Batch: ; METRC Sample:



## Quality Control Data

Analytical Batch ID	QC Sample ID	Assay Name	QC Category Name
301 HPLC4 20190423-2	PLCS04181901F	Cannabinoids	Lab Control Sample

### QC Notes

None

Compounds	LCS Result (%)	LCS Spike	LCS % Rec	% Limits	Notes
THCa	4.09	4.45	91.91	70 - 130	-
Δ9-THC	2.97	3.47	85.59	70 - 130	-
CBDa	5.33	5.69	93.67	70 - 130	-
CBD	3.65	3.55	102.82	57 - 143	-

## USA Hemp Company

Sample: 1904CH0226.1123

OR 97038  
rafael@usahempc.com  
(503) 875-0101  
Lic. #

Strain: Wild Bourbon  
Batch#: ; Batch Size: 5 g  
Sample Received: 04/18/2019; Report Created: 04/26/2019; Expires: 04/26/2020  
Harvest/Production Date: 10/30/2018  
Sampling: Random; Environment: Room Temp

## Barrel #88

Plant, Flower - Cured, Outdoor  
Harvest Process Lot: ; METRC Batch: ; METRC Sample:



## Quality Control Data

Analytical Batch ID	QC Sample ID	Assay Name	QC Category Name
301 HPLC4 20190423-2	PMS04181901F	Cannabinoids	Spike

### QC Notes

None

Compounds	LOQ	Matrix Duplicate % RPD	Duplicate RPD Notes	Matrix Spike % Rec	% Limits	Notes
THCa	0.02	5.57	<20	106	70 - 130	-
Δ9-THC	0.02	196.23	>20	5762	70 - 130	Above Limit Range
CBDa	0.02	6.06	<20	106	70 - 130	-
CBD	0.02	<LOQ	<LOQ	95	70 - 130	-

